



World Tracking Solutions

Installation Guide



Load SmartTrack Client on your Mobile Device

Software Requirements

- Client for BlackBerry
 - Must have BlackBerry OS 4.2 or newer

Note: Devices must be GPS capable and approved from the device compatibility list to work with the World Tracking Solutions Client software.



Installing the World Tracking Solutions Client for BlackBerry

A

Download the application by going to the following site in your BlackBerry web browser:

<http://mytracksite.net/m>



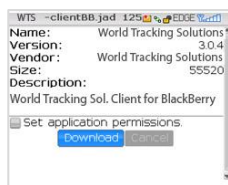
B

Select > Client for BlackBerry from the list of client options.



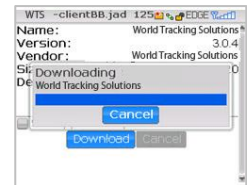
C

Select > Download



D

Please wait while the download progress will be shown on the screen



E

Check > "Don't ask this again" to grant access to the GPS location information and then select "Yes"

This step is very important, if GPS location access is not granted then a GPS fix will not be possible.



F

Check > "Don't ask this again" to grant access to the phone information and then select "Yes"

This step is very important, if phone access is not granted then a GPS fix will not be possible.



G

Once the installation has completed please select > reboot



World Tracking Solutions Client for BlackBerry User Interface

Note: The Client for BlackBerry application is only for Status and Configuration, closing the application will not disable the device from sending location data to the server. This is done with another application that is always running in the background of the device.

A Select > Start > Programs > World Tracking Solutions Client application



B The World Tracking Solutions Client will open to the Status page. The first time you will see that it is establishing the initial GPS fix



C Sample of the status page while connected to the server



D If you select > menu button on the BlackBerry device you be prompted with a menu



E Use the about screen to obtain the Device ID



Informational Use:

Status Messages for BlackBerry devices

The following is the complete list of the scenarios the application tracks along with the corresponding display message and color of the message

1. Common Operational Messages

Waiting for GPS fix... (Green)

Getting GPS location

OK GPS fix sent (Green)

This message stated the device has received an accurate GPS fix and has sent to the GPS Footprints Server successfully

Could not connect (Red)

Not able to connect to the Server because of incorrect URL or problem with the cellular network

No GPS fix available (Red)

Not able to get an accurate fix from the GPS chip, will retry

Error: Invalid configuration (Red)

This error occurs when there is no path set into the URL field of the configuration.

